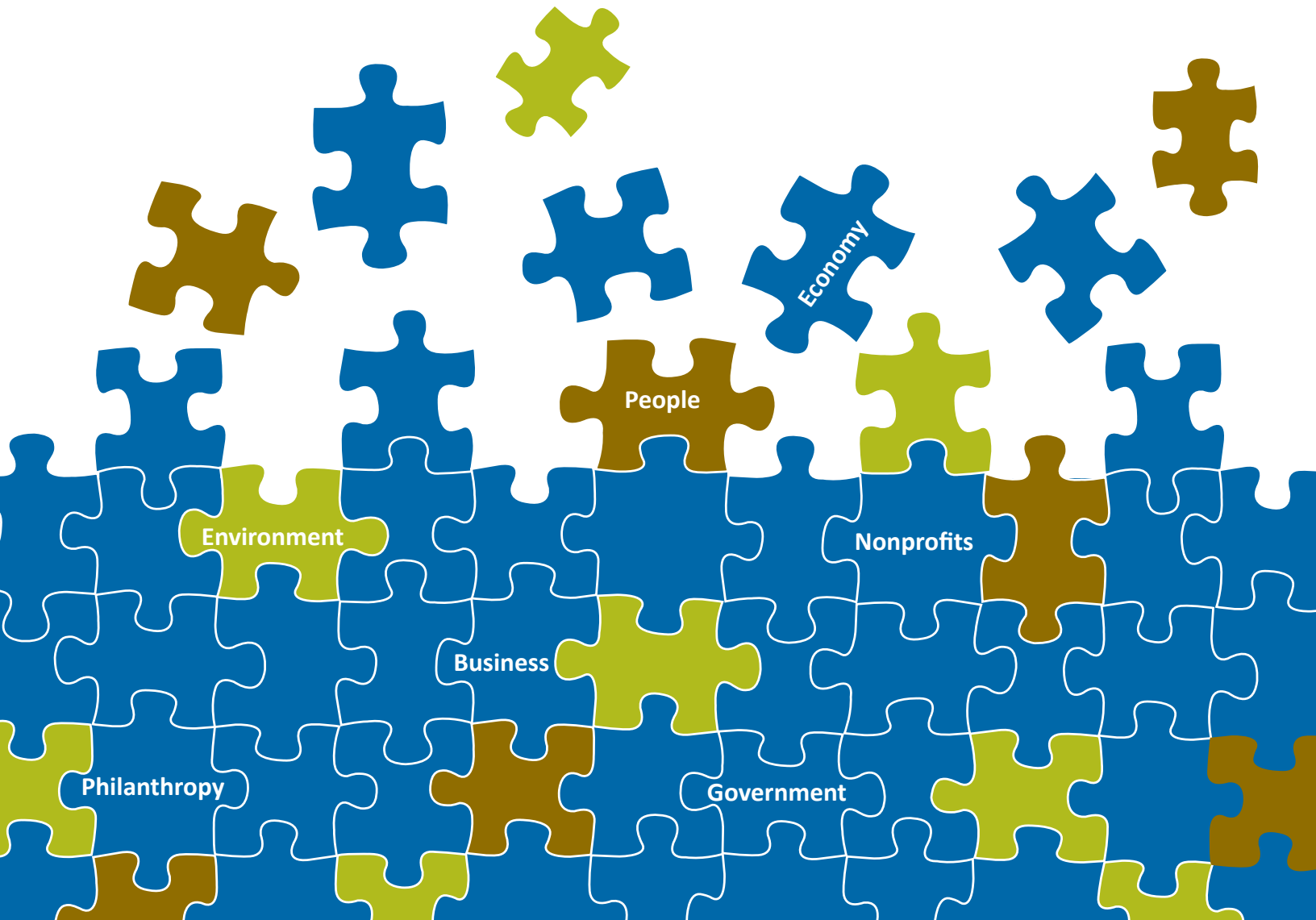




WEST MICHIGAN
STRATEGIC
ALLIANCE

Action Report 2010-2011



WMSA BOARD OF DIRECTORS

Officers

Alan G. Vanderberg, Ottawa County (Chair)

James Dunlap, Huntington Bank – West Michigan (Co-Vice-Chair)

Dale Nesbary, Muskegon Community College (Co-Vice-Chair)

Bob Garretson, Waddell & Reed (Secretary)

Chris Hyzer, Montcalm County (Treasurer)

James W.F. Brooks, Brooks Capital Management LLC (Founding Chair)

Greg Northrup, West Michigan Strategic Alliance (President) northrupg@wm-alliance.org

Directors

Jim Bachmeier, Grand Valley State University

James Buck, City of Grandville

Tony Castillo, Milagro Six Inc./McDonald's

Daryl Delabbio, Kent County

Candace Dugan, Grand Valley State University

Kurt Dykstra, City of Holland

Bing Goei, Eastern Floral & Gifts

Vanessa Greene, Hope College

Bonnie Hammersley, Muskegon County

Lesla Hardiman, Empire Education Group

Kenneth James, Meijer

Cindy Larsen, Muskegon Lakeshore Chamber of Commerce

Terry Lenhardt, Steelcase Inc

Mat Nguyen, Worksighted, Inc.

Milt Rohwer, Frey Foundation

Elissa Sangalli-Hillary, Local First

Many Thanks to these Board members who have served so well in the past:

Ryan Cotton, Village of Spring Lake

Roland Crummel, North Muskegon

Steve Heacock, Spectrum Health Systems

Lyman Parks, Jr., Meijer

DEAR WMSA SUPPORTER,

A puzzle comes together because the pieces of the big picture interlock seamlessly. When the puzzle is completed, it is difficult to see where one piece leaves off and another begins—each is an essential part of the whole.

Our region is like a puzzle. West Michigan is an interconnected set of systems that serve 1.4 million people fortunate to call this home. These systems provide for a prosperous economy, a sustainable environment and equal opportunities for all.

Putting the regional puzzle together isn't accomplished by one entity. It is done through the many interrelated actions of citizens and organizations. This is the "regional mindset" that WMSA has championed for more than 10 years now.

Connecting each piece of the puzzle requires an element of trust—a willingness to take the time and effort to broker relationships that benefit all parties. Too often, collaboration is confused with capitulating or giving up something. In reality we are made stronger by unifying our efforts to compete in the global marketplace, to provide for those in need, to care for the environment and to advance the skills of our workforce.

In West Michigan, big pieces of the puzzle are coming together, like the new collaborative agreement among economic development agencies in the region to work together. And smaller (but no less important) pieces of the puzzle are coming together like the willingness of most of the local governmental units in Ottawa County to use the same colors on their zoning maps.

West Michigan is making progress in putting together the regional puzzle. Our region is nationally recognized for assembling many pieces through collaborative actions. The Board is proud to say WMSA's work in creating a regional mindset, being an unbiased source of reliable data, and bringing together experts and stakeholders on a variety of important challenges is making a difference.

Thank you for your interest in and support of our region,



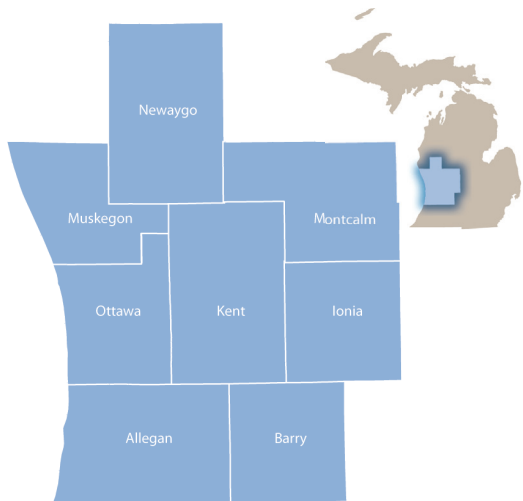
Alan G. Vanderberg
Chair, West Michigan Strategic Alliance

CREATING A REGIONAL MINDSET

In 2010, we tracked the following volunteer involvement statistics:

- WMSA's process and initiatives brought regional thinkers together 93 times in groups of 10 or more people in 2010.
- 1,193 unique individuals devoted more than 3,278 hours to working regionally in 2010.
- The WMSA database of individuals and organizations totaled 7,129 in 2010.
- Website traffic had 17,295 unique visitors with 777,189 hits in 2010, an increase of 117,883 hits or 18%.
- WMSA received inquiries from 1,832 visitors on the *Get Involved* page of the website.

WEST MICHIGAN STRATEGIC ALLIANCE



The West Michigan Region

- Counties served: Allegan, Barry, Ionia, Kent, Montcalm, Muskegon, Newaygo, and Ottawa
- Population: 1,384,899 (2010 US Census)
- 5.4% increase from 2000 to 2010

WMSA serves the 1.4 million people of eight Michigan counties by encouraging and promoting regional actions to affect six Priorities for Regional Collaboration:

- Create a Regional Mindset
- Foster a Prosperous Economy
- Strengthen Community Through Diversity
- Ensure a Sustainable Environment
- Revitalize Our Urban Centers
- Develop a Tri-plex Growth Strategy

WMSA provides leadership in developing regional strategies that work. WMSA brings government, business and institutions together to work on our region's toughest challenges.

Vision: West Michigan is a best place to live, learn, work and play.

Mission: To be a catalyst for regional collaboration.

Over Arching Goal: To enhance economic vitality, increase social equity and ensure environmental integrity in West Michigan over the long-term through strategic, collaborative action by business, community and government leadership.

WEST MICHIGAN REGIONAL INDICATORS

WMSA has become a trusted source of regional data and comparative analysis. Data informs all of our work. The fourth edition of The West Michigan Vital Signs was published in 2010.

The data presented in the Vital Signs is intended to lead to action. The Vital Signs have been instrumental in identifying the gap in West Michigan's educational attainment—measured by the percentage of the population ages 25 to 34 with B.A. degrees or higher—as an important challenge to address.

WMSA currently manages two initiatives to improve Educational Attainment in the region. Additional information about the West Michigan Internship Initiative and the Literacy to Work Initiative can be found on pages 4 and 5.

TALENT 2025 (page 4) has set a bold goal to ensure that 60% of the region's workforce achieves a post-secondary degree or credential by 2025. This effort is designed to increase the percentage of people with bachelor's degrees from 23.7 percent today to 30 percent in 2025 and the percentage of the workforce with associate degrees or credentials from 11.3 percent to 30 percent in 2025.

Many other organizations in the region are working to increase the Educational Attainment of our workforce. Programs are available through Michigan Works! offices, community colleges, Upward Bound organizations, the Literacy Center of West Michigan and many more organizations. The College Access Network is active in several communities in the region and is designed to coordinate programs, services and resources that lower the barriers preventing students, particularly low-income and first-generation students, from pursuing postsecondary educational opportunities.

REGIONAL INDICATORS TECHNICAL TEAM

Connie Bellows, Conversation Matters

George Erickcek, W.E. Upjohn Institute for Employment Research

John K. Koches, Annis Water Resources Institute, GVSU

Greg Northrup, West Michigan Strategic Alliance

Jeremy Pyne, Community Research Institute, GVSU

Jon VanderMolen, Annis Water Resources Institute, GVSU

Pam Landes, Think Again
(Project Manager) think_again@comcast.net

INTERNSHIP ADVISORY COMMITTEE

Dale Austin, Hope College
Rachel Beklin, Grand Valley State University
Sally Birkam, Muskegon Community College
Gail Beausoliel, Davenport University
George Bosnjak, The Right Place, Inc.
Margie Broton, Baker College of Muskegon
Christine Brown, Kendal College of Art and Design
DJ Chivis, Human Resources Recruiter
Amanda Chocko, Momentum
Jane Clark, Holland Area Chamber of Commerce
Beth Cok, Calvin College
Frank Coronado, Ottawa County Michigan Works!
Mitch Dennison, RC Productions
Leigha DeMaagd, Porter Hills
Dick de Splender, Coldwell Baker-Woodland Schmidt
Sara DeVries, Hope College
L. Kevin Douglas, Amway
Judy Elsey, Ferris State University
Troy Farley, Grand Valley State University
Danielle Hall, Thomas M. Cooley Law School
Paul Howland, Michigan Economic Development Corporation
Paul Jaques, Michigan State University
Lynn Kelly-Albertson, Western Michigan University
Laurie Lemmen, Calvin College
Lisa Luckey, Luckey Financial Services
Ronald Modreski, RAM Management Group
AnnMarie Post, Aquinas College
Angela Roman, Ferris State University
John Sanford, Axios & AHRM
Linda Schultz, Mass Mutual
Lauretta Simpson, Aquinas College
Sharon Smith, Aquinas College
Tom Stanfield, Simplicity Tactics
Sandy Swanson, Steelcase Inc.
Glen Triezenberg, Calvin College
Linda Joy Vasquez, Disability Advocates
Keith Van Beek, Ottawa County
John Warren, Cornerstone University
Luanne Wedge, Grand Rapids Community College
Cami Zawacki, HRAA Strategies
Greg Northrup, West Michigan Strategic Alliance
(President) northrupg@wm-alliance.org

Many thanks to these members who have served the Internship Initiative so well in the past:

Shaughn Coyer, Meijer
Tom Demmon, Grand Valley State University
Kelli Richards, Davenport University
Lori Staggs, Davenport University
Carol Townsend, Kent/MSU Extension
Eric Williams, Grand Rapids Community College

Thank you to **Cindy Brown** for her leadership of the West Michigan Internship Initiative.

WEST MICHIGAN INTERNSHIP INITIATIVE

The Internship Initiative has made great progress toward its goal of creating 3,000 additional internship opportunities in the region by the end of 2011. A survey conducted in November 2010 showed more than 1,025 new internships have been created in the region.

During the spring of 2010 WMSA partnered with Area Community Services Employment and Training Council (ACSET, the Kent County Michigan Works! Agency) and Kent Intermediate School District, which connected 39 qualified college students with paid internship opportunities, utilizing more than \$58,000 in funding available through The American Recovery and Reinvestment Act of 2009.

A Regional Advisory Committee consisting of employers and career directors from universities, colleges and community colleges throughout the region is working to find innovative ways to increase the number of internships in West Michigan and retain a young, talented workforce.

The Employers' Internship Toolkit, a comprehensive guide for employers who wish to develop an internship program in their business organization, is available free of charge on the WMSA website. In 2010, 92 presentations to employers and students and 26 Employer Internship Training Sessions (averaging 20 persons) were completed.

As part of a statewide internship strategy, WMSA continues its strong partnerships with Prima Civitas in Lansing, Traverse City Area Chamber of Commerce and Detroit Regional Chamber of Commerce.

In 2011 and 2012 the Internship Initiative will reach out to nonprofit organizations in the region with special training sessions to help them develop internships or enhance their existing program.

TALENT 2025

TALENT 2025, now an independent 501c3 organization, grew out of the WIRED West Michigan Initiative. The mission of TALENT 2025 is to ensure an ongoing supply of world-class talent for West Michigan employers by 2025. Building on WIRED's successful tri-sector collaboration involving business, government and institutions, TALENT 2025 is an employer-led effort focused on four elements of the region's talent system: education, public policy, quality of place and economic development.

TALENT 2025 seeks to illuminate gaps in the talent system, evaluate leading practices, advocate for the adoption of these leading practices and celebrate the success of its partner organizations. To date, working groups have been established for Early Childhood Development, Higher Education, Internships and Adult Workforce Development and have endorsed strategies such as WorkKeys, the West Michigan Internship Initiative and Reverse Degree Attainment agreements as ways to improve the quality and quantity of the region's talent.

Kevin Stotts, TALENT 2025 (President) k.stotts@TALENT2025.org

LITERACY TO WORK

As a result of our success with WIRED West Michigan, WMSA was awarded a \$550,000 grant from the Walmart Foundation's "America Works!" initiative to create the West Michigan Literacy to Work Initiative in 2010.

WMSA is facilitating the adoption of an enhanced training program for displaced and incumbent workers to achieve a General Equivalency Diploma (GED) and a National Career Readiness Certificate (NCRC) and to qualify for various funding opportunities (Trade Adjustment Assistance, No Worker Left Behind, Pell, etc.) for additional training. The West Michigan Literacy to Work Model offers a contextualized, enhanced approach along with employability components (employability skills training, computer literacy, financial literacy) and individual career coaching, which helps students establish educational and career goals and create a plan to achieve those goals.

In its first year, the West Michigan Literacy to Work Initiative was implemented by seven partners in Ottawa County and enrolled 211 students. Of the 211 enrolled students, 87 students earned their GED, 53 their NCRC, 30 students earned their MI Employability Skills Certificates, 11 students completed Computer Essentials training and 32 students completed Financial Literacy. Twelve students have transitioned into or are waiting for funding to enter post-secondary education or training programs, and 43 students have gained employment.

The Literacy to Work Initiative seeks to replicate this enhanced literacy program in all eight counties served by WMSA.

LITERACY TO WORK ADVISORY COMMITTEE

Megan Byard, White Lake Area Community Education
Vera Grishkina, Literacy Center West Michigan
Deb Huggins, Ottawa Area Intermediate School District/Thompson M-TEC
Rachael Jungblut, Grand Rapids Community College
Mike O'Connor, Sparta Area Schools - Adult Education
Doug Wood, Orchard View Adult Education
Jessica Materson, West Michigan Strategic Alliance (LTW Project Manager) jmaterson@wm-alliance.org

Initiative Partners

Fruitport Schools - Adult Education
Grand Rapids Community College
Huntington Bank
Literacy Center of West Michigan
Orchard View Schools - Adult & Community Education
Ottawa Area Intermediate School District/Thompson M-TEC
Ottawa County MI Works! Agency
Sparta Public Schools - Adult Education
White Lake Area Community Education
Zeeland Public Schools - Adult Education

WEST MICHIGAN ENERGY

WMSA believes that alternative energy options are an important component to the recovering economy. West Michigan has become a leader with the development of three electric vehicle car battery plants.

The Alternative Energy Cluster Analysis, developed by WMSA and its partners in 2007, helped to focus West Michigan's strengths on alternative energy strategies. West Michigan Energy came together and asked WMSA to bring a regional thought process to the table.

WMSA advocated for the installation of Electric Vehicle Charging stations to promote the advanced battery sector in the region. 50 EV charging units will be installed in the region by September 2011. Additional advocacy is expected to lead to the broad adoption of electric and hybrid vehicles in the region. WMSA continues to advocate for wind, solar and biomass as preferred alternative energy solutions.

WEST MICHIGAN ENERGY ADVISORY COMMITTEE

Haris Alibasic, City of Grand Rapids
T. Arnold (Arn) Boezaart, Grand Valley State University
Rick Chapla, The Right Place, Inc.
Juan Lopez-Doriga Escalante, Rockford Bergé
Anette Estrada, BDO Seidman, LLP
Bruce Goodman, Varnum LLP
Nate Lowery, Windquest
Daniel E. Nally, Holland Board of Public Works
Julie Parks, Grand Rapids Community College
Roger Rehkopf, Rockford Construction
Charlie Standridge, Grand Valley State University
Bruce Thompson, Mapa Group
Matt Zimmerman, Varnum LLP
Greg Northrup, West Michigan Strategic Alliance (President) president@wm-alliance.org

PARTICIPATING COUNTIES

Michael Brown, Barry County

Daryl Dellabio, Kent County

Bonnie Hammersley, Muskegon County

Stephanie Hurlbut, (Interim) Ionia County

Chris Hyzer, Montcalm County

Tobi Lake, Newaygo County

Rob Sarro, Allegan County

Alan G. Vanderberg, Ottawa County

INTERGOVERNMENTAL COLLABORATION

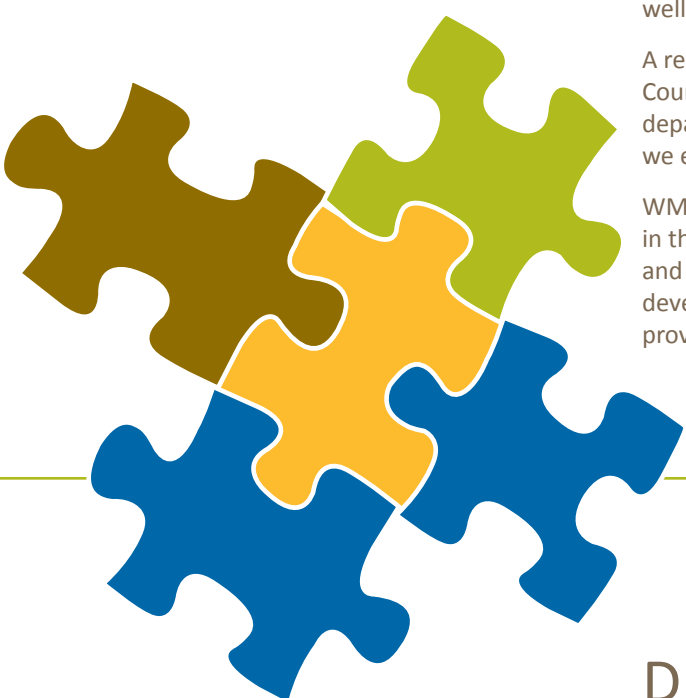
Our governmental membership program continues to grow. In 2010, we helped roll out a new service to local units of government.

Kent County's innovative Purchasing and IT departments developed an on-line reverse auction tool. It works like a real-time auction where the price is bid down by sellers who are competing to sell goods and services for progressively lower prices, like eBay—in reverse.

The reverse auction increases competition and transparency for commodity purchases and streamlines the procurement process. Average savings achieved are 18% lower than the target bid price for all sorts of commodities, from paper and light bulbs to one time purchases, such as printers and internet T1 lines, as well as everything in between.

A regional roll out of the system began in 2010 with the local units of Kent County. To date, 23 units have been trained to use the system. Ottawa County's departments are expected to be participating in the next few months. In 2011, we expect to add local units from all eight counties.

WMSA facilitates exploratory meetings among the eight county administrators in the region. These meetings provide an opportunity to share information and discuss common concerns. In the spring of 2011, all eight counties jointly developed an insurance coverage survey to help share best practices for providing health insurance.



PARTICIPANTS IN THE DIVERSITY COLLABORATIVE

Sean Huddleston, Grand Valley State University (Co-Chair)

Linda Joy Vazquez, Disability Associates of Kent County (Co-Chair)

Ken James, Meijer

Robyn Afrik, Good Samaritan Ministries

Christina Arnold, Grand Rapids Community College

Kris Drake, Access Health

Gail Harrison, Lakeshore Ethnic Diversity Alliance

Nancy Haynes, Fair Housing Center of West Michigan

Sharon Darby, Cascade Engineering

Patricia Strachan, West Michigan Strategic Alliance (Executive Assistant) p.strachan@wm-alliance.org

DIVERSITY COLLABORATIVE

In 2010, WMSA began looking at organizations throughout West Michigan who work on issues of diversity and inclusion. Interviews were conducted with 27 practitioners. These interviews were used as the basis for a region-wide meeting to discuss diversity efforts and to gauge interest in developing the West Michigan Diversity Collaborative as a way to share best practices and identify overlaps and gaps in service.

To date, 48 organizations throughout the region are a part of the new Diversity Collaborative, with eight of these organizations serving on the West Michigan Diversity Leadership Council. The Leadership Council is currently in the process of creating a five-year strategic vision.

Future plans of the West Michigan Diversity Collaborative include potentially developing a website which will link any/all diversity efforts taking place throughout the region. The website would provide 'one stop shopping' for those interested in diversity and inclusion in West Michigan.

Many thanks to **Kelley Losey** for her service to the Collaborative.

Thank you to **Tedd Parsons** for his work to help establish the Collaborative.

GREEN INFRASTRUCTURE

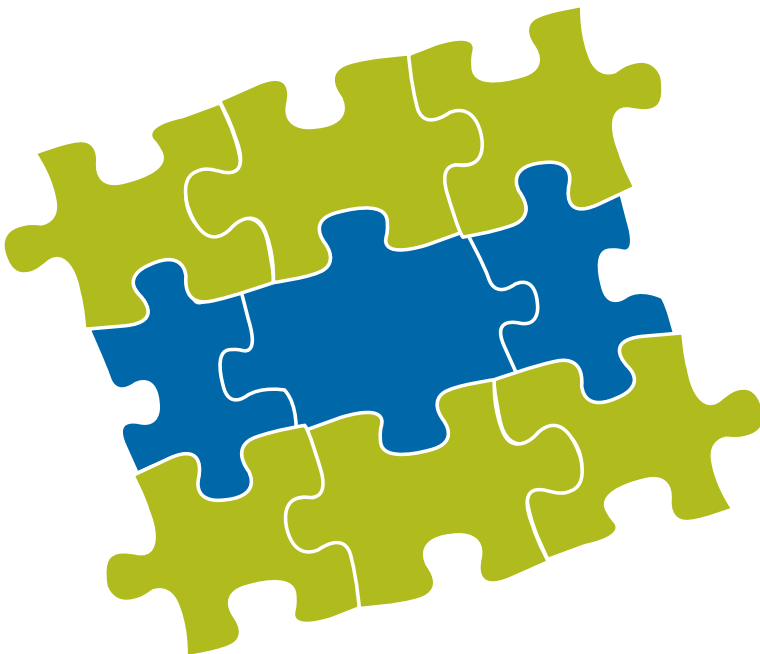
The Green Infrastructure Initiative (GII) has taken input collected through a focus group process and begun to develop an updated strategic plan. The work of the GII will pursue the vision: West Michigan will have a secure, stable, and vibrant network of natural support systems—watersheds, wetlands, forests, parks, greenways, farmland, dunes and open spaces—resulting in an enhanced quality of life.

GII will take as its mission: To encourage regional collaboration and to translate best practices in green infrastructure planning to decision makers and communities to preserve, protect, and restore a sustainable green infrastructure network throughout the West Michigan region.

In 2010-2011, GII demonstrated the potential use of the INtegrated Valuation of Ecosystem Services Tool (INVEST), created in partnership with researchers at Grand Valley State University's Annis Water Resources Institute and the Seidman College of Business and Michigan State University's Institute for Water Research and the Kellogg Biological Station. This online tool puts a monetary value (dollars per acre or dollars per mile, per year) on ecosystem services. Ecosystem services are defined as the benefits provided to humans by various types of natural land uses and land covers.

With funding from Meijer, WMSA worked with the Nature Conservancy and INVEST project partners at GVSU to apply INVEST to the Owasippe Scout Reservation (Owasippe) in Blue Lake Township, Muskegon County, Michigan. The project team developed an ecosystem services valuation calculator prototype to be incorporated into INVEST.

Through the development and application of the ecosystem services valuation calculator, local data such as recreational usage, amenities, plant and wildlife species, the number of surrounding parcels and their land use and land cover types; demographic data such as population density and household income; and the availability and proximity of substitute sites, such as parks, forest, campgrounds, were refined for the Owasippe parcel to potentially support the Nature Conservancy's proposal to the Natural Resources Trust Fund and other funders for the preservation of this site.



“Green infrastructure” refers to an interconnected network of green space and environmental assets that conserves the functions of native ecosystems and provides associated benefits to people.

GREEN INFRASTRUCTURE LEADERSHIP COUNCIL

Leadership Partners

Bonnie Blackledge, Cannon Township (Chair)

Ryan Coffey, MSU Extension/Newaygo County (Vice-Chair)

Andrew Bowman, Grand Valley Metropolitan Council

Rick Chapla, The Right Place, Inc.

Ryan Cotton, Village of Spring Lake

Rodney Denning, Annis Water Resources Institute, GVSU

Mary Fales, Macatawa Area Coordinating Council

Rachel Hood, West Michigan Environmental Action Council

Cynthia Price, Greater Grand Rapids Food Systems Council

David Rinard, Steelcase, Inc.

John Scholtz, Ottawa County Parks & Recreation Commission

Dr. Alan Steinman, Annis Water Resources Institute, GVSU

Bill Stough, Sustainable Research Group

Janice Tompkins

Supporting Partners

Joanne Barnard, Barry Conservation District

James E. Ferro, Ada Township

Marty Gerencer, Morse Marketing Connections, LLC

Amy Haack, West Michigan Shoreline Regional Development Commission

Craig Hondorp, Progressive AE

John K.Koches, Annis Water Resources Institute, GVSU

John Legge, The Nature Conservancy

Sharon Nunnelee, West Michigan Trails & Greenway Coalition

Milt Rohwer, Frey Foundation

Roger Sabine, Kent County Parks

David Swan, Saugatuck Dunes Coastal Alliance

Kendra Wills, United Growth for Kent County

Many thanks to **Elaine Sterrett Isely** for her leadership of the Green Infrastructure Initiative.

REGIONAL SERVICE DELIVERY ADVISORY COMMITTEE

Steve Heacock, Spectrum Health Systems (Chair)

Charles Mulholland, West Michigan Regional Planning Commission (Vice Chair)

James Buck, City of Grandville

John Bultema, Fifth Third Bank

Robert Daddow, Oakland County

Eric DeLong, City of Grand Rapids

Becca Dernberger, Manpower

Janet DeYoung, Community Foundation of the Holland/Zeeland Area

Rosemary Ervine, Macatawa Area Coordinating Council

Sara Hambley, Ottawa County Michigan Works!

Bill Lowry, Mi Biz

Larry Murphy, Varnum, Riddering, Schmidt & Howlett

Dale Nesbary, Muskegon Community College

Terry Nienhuis, Holland Charter Township

Michael C. O'Connor, Professional Counseling & Educational Services LLC

Bob Roth, Roman Manufacturing

Elissa Sangalli-Hillary, Local First

Sheri Thompson, West Central Michigan Works!

Technical Resources

Julie Metty-Bennett, Public Sector Consultants

Greg Northrup, West Michigan Strategic Alliance

Eric A. Scorsone, State and Local Government Program, Department of Agricultural Economics, Michigan State University

Mark Wyckoff, Land Policy Institute, Planning & Zoning Center, Michigan State University

Pam Landes, Think Again
(Project Manager) think_again@comcast.net

REGIONAL SERVICE DELIVERY

With the help of the Land Policy Institute and the State and Local Government Program at Michigan State University, WMSA began an investigation into the barriers to collaboration among federal and state resourced organizations. We developed 20+ state maps depicting the “regional” boundaries of agencies such as Michigan Works, Adult Education Regions, and State Planning and Development Regions.

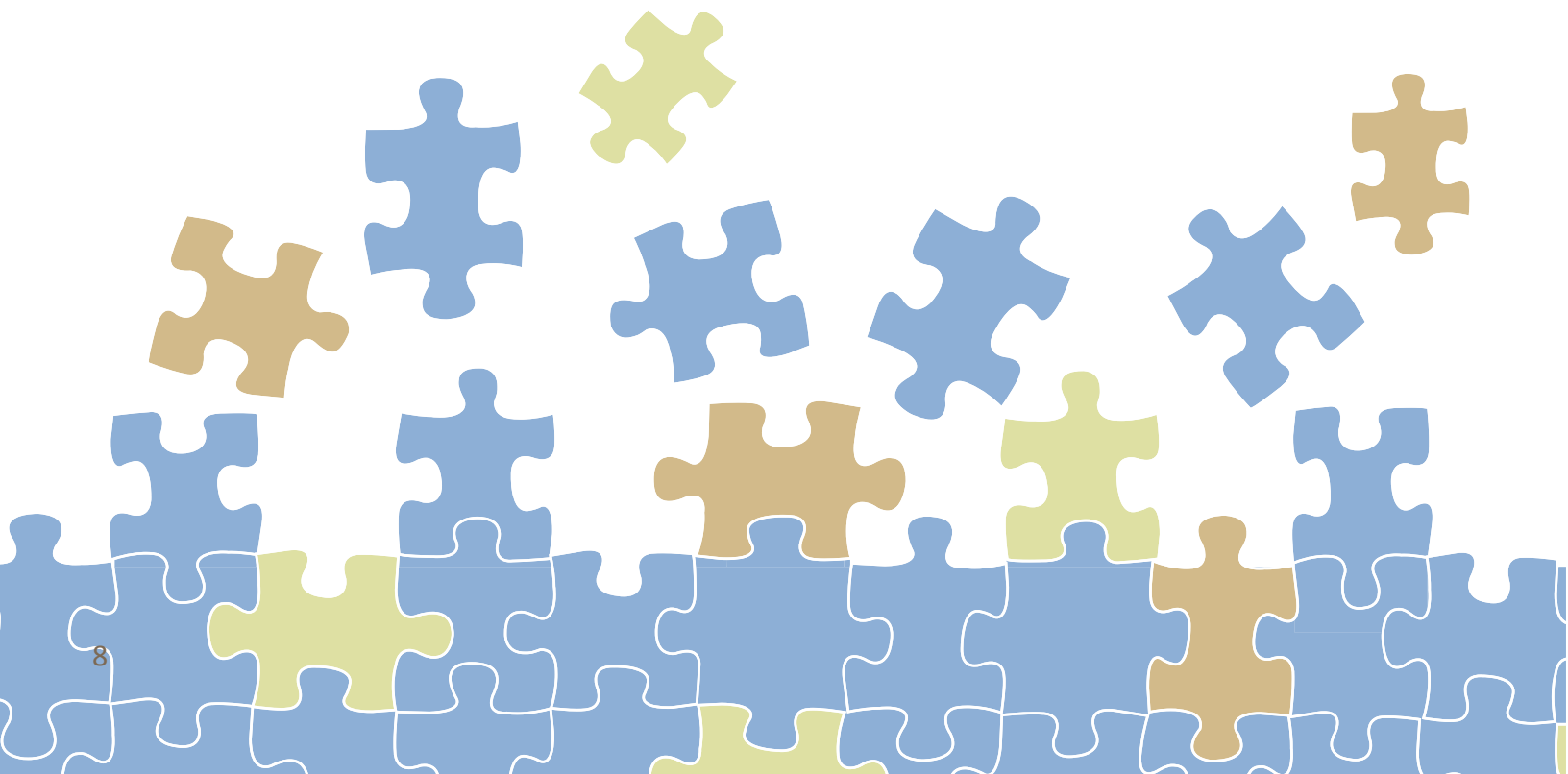
This information caught the interest of the Business Leaders for Michigan. They have commissioned an investigation into what is and is not working in regard to the structure of resource allocation for local service delivery. The investigation will center on federal and state resources that impact the creation, retention and expansion of jobs. This is an opportunity to reinvent how resources are connected with local service delivery as embraced by the current state administration.

The project looks at how state and federal resources for economic development, workforce development, transportation and adult education programs flow in to West Michigan. These services must work together and complement one another to ensure a rebound for our economy.

WMSA seeks to increase effective use of state and federal resources in local service delivery by objectively investigating regional alignment of service geographies.

Each service delivery boundary has evolved based on a rationale that made sense for that system at the time, but the thinking did not necessarily take into account the interconnection of the various systems of the economic region or the need to collaborate across systems.

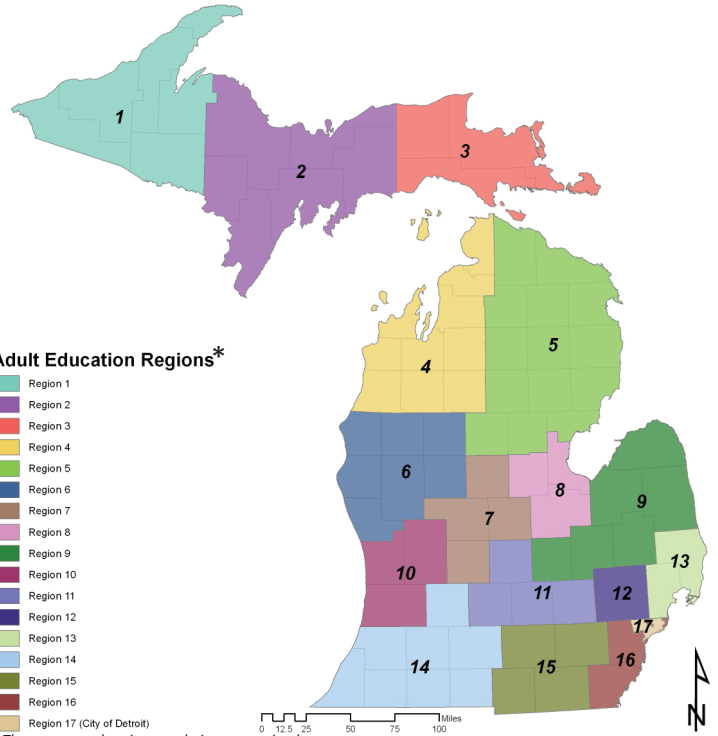
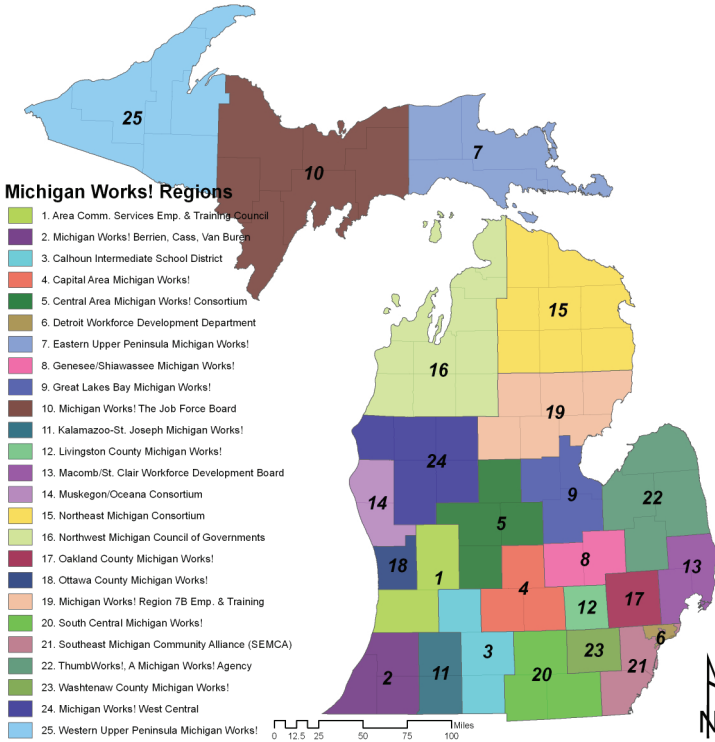
Phase One of the project, ending in November 2011, will provide the Advisory Committee with information on the amounts of money flowing to these systems and background on how each system was created. This group will recommend next steps to the WMSA Board of Directors. WMSA’s recommendations will be presented to the Business Leaders for Michigan and subsequently to the current state administration.



SERVICE DELIVERY MAPS

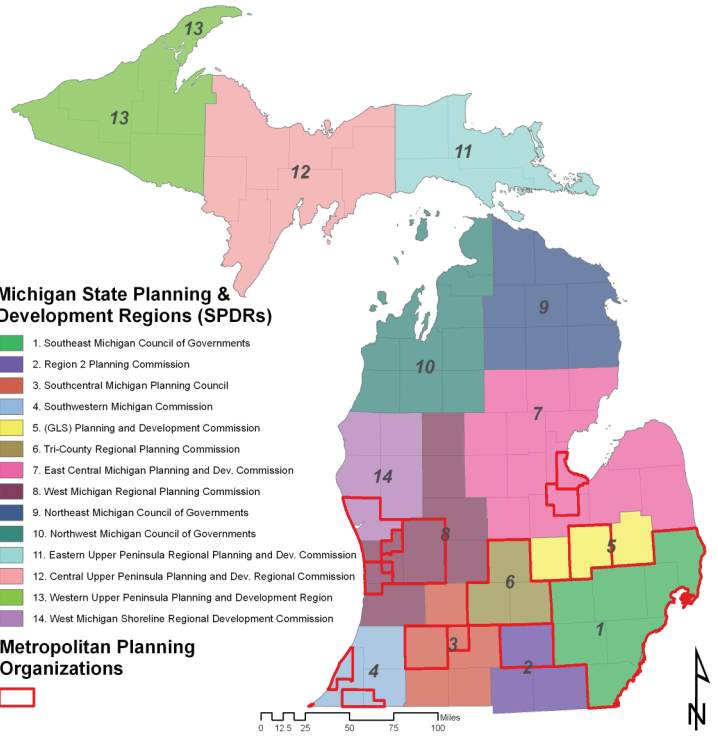
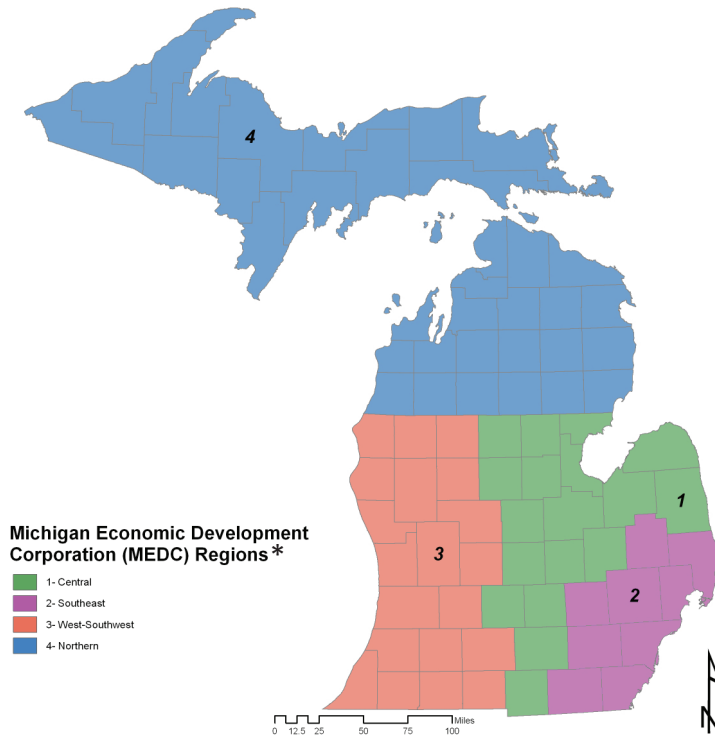
MICHIGAN STATE UNIVERSITY
Land Policy Institute

MICHIGAN STATE UNIVERSITY
Land Policy Institute



MICHIGAN STATE UNIVERSITY
Land Policy Institute

MICHIGAN STATE UNIVERSITY
Land Policy Institute



WMSA'S INTERNS

Ariana Herrera, Intern, Administration

Originally from the Grand Rapids area, Ariana started with WMSA in January of 2011. She recently graduated from Grand Valley State University with a degree in Public and Nonprofit Administration. Ariana was an active member on campus in the Latino Student Union, Student Environmental Coalition, American Humanics, and Yoga Club and on the executive board of Active Minds. In the upcoming year, she will be teaching English in China before returning to get her Master's degree in Business or Education. In her spare time, Ariana loves to read, play tennis and practice yoga.

Erika Arndt, Intern, Green Infrastructure

Erika started volunteering at West Michigan Strategic Alliance for the Green Infrastructure Initiative (GII) during her junior year at Grand Valley State University (GVSU). Volunteering with the GII transitioned into an internship, for credit, in her major, Public, Nonprofit and Health Administration. Her interest in the GII stems from her passion for the environment and the importance of best management practices by decision makers—a complementary blend of her major and her Environmental Studies minor. Originally from the Grand Rapids area, she has a passion for the West Michigan region and all of the resources it has to offer, especially for hiking, traveling and fishing. She also is an active member of Order of Omega at GVSU and serves on the executive board for Alpha Omicron Pi and Law Society. Currently, Erika is interning at the Annis Water Resources Institute. She intends to pursue her interests in water law advocacy and clean air and wind energy policies. Following graduation in April of 2012, Erika plans to pursue a Masters degree in public policy, environmental law or natural resource management.

FUNDING

WMSA is responsible and accountable to the region's stakeholders. The utmost care is taken to get the most impact out of each dollar entrusted to the organization. Funding for WMSA comes from federal, state and foundation grants and private contributions. The vast majority of expenses are committed directly to our initiatives.

WMSA is grateful for the generous financial support of each of its contributors.

2010 Revenue *

U.S. Government Grants and Contracts	\$238,736.00
State Government Grants and Contracts	\$654,761.00
Foundations	\$211,172.00
Contributions – Corporate, Memberships & Individual	\$ 26,980.00
Total Revenue	\$1,131,649.00

2010 Expenses*

WIRED	\$221,308.00
Other WMSA Initiatives	\$383,553.00
Administrative Operations	\$405,924.00
Fundraising	\$28,042.00
Total Expenses	\$1,038,827.00

*These represent unaudited figures.

THANK YOU!

Regional collaboration is easy to talk about—difficult to do and maybe even more difficult to sell. We are grateful to those who truly understand the value of working together to achieve a shared vision of West Michigan as a best place to live, learn, work and play.

Your generous contributions will help to advance regional collaboration in West Michigan. WMSA depends on donors like you to fund the research and development necessary to tackle our region's toughest challenges. Because of you, our region will have more internships for young adults, faster ways to earn a GED, more environmentally sustainable manufacturing practices, reduced emissions, cleaner water, stronger economic development and more opportunities for government, business, education and non-profits to work together.

CONTRIBUTORS

Dixie Anderson

Lindsay Anes

Barry County Chamber of Commerce

Brooks Family Community Fund

James Bruckbauer

James & Kathryn Buck

Consumers Energy

Thomas Creswell

DP Fox Ventures, LLC

Robert J. & Katherine M. Daverman Fund

Richard & Helen DeVos Foundation

Detroit Regional Chamber Foundation

Andrea Dickerson

Marty Dugan

Paul Elzinga

Elzinga & Volkers

Fremont Area Community Foundation

Frey Foundation

Grand Rapids Community Foundation

Haworth, Inc.

Herman Miller Foundation

Holland Hospital

J.C. Huizenga

Derek Hunderman

Huntington Bank

Irwin Seating Company

ITC Transmission

JSJ Corporation

Michael & Susan Jandernoa

Stephanie Januchowski

Jurries Family Foundation

Christina Keller

Lacks Enterprises, Inc.

Sandra LeBlanc

John Logie

Nate Lowrey

Meijer

Robin Mellema

Philip Meyer

People and Land

Cynthia Pimm

Cynthia Price

Professional Administrative Resources LLC

Gregory Rhodes

Karel Rogers

S2 Yachts, Inc.

Terri Schroeder

Linda Schulz

Stephen Scott

Secchia Family Foundation

John Shea

Linda Sievert

Dan Slate

Steelcase Foundation

Ann Tabor

Think Again

Tom Tilma

Trailer Equipment, Inc.

Peter Turner

John Verhagen

Ron Vriesman

Gary Wager

Walmart Foundation

Warner Norcross & Judd LLP

West Michigan Environmental Action Council

West Michigan Mechanical Contractors Association

Worksighted

World Affairs Council of Western Michigan

John Worsley

BE REGIONALLY CONNECTED

CONTRIBUTE

If you are not already a contributor to WMSA, please join the many people and organizations from around West Michigan who support regional collaboration with a tax deductible contribution to the West Michigan Strategic Alliance. It's easy to contribute via PayPal available at www.wm-alliance.org.

PARTICIPATE

Successful collaborative action requires the input of participants with diverse perceptions and points of view. Participation in any WMSA-sponsored activity or initiative is open to all. Contact WMSA to learn more.

NETWORK

Become a fan of the WMSA Facebook Page, follow us on Twitter, and be a part of the conversation on our blog, Regionally Connected. Links to all of these networking opportunities are on our website. If you are already collaborating with others for the improvement of West Michigan, please let us know. WMSA would like to link to your Web page. Visit www.wm-alliance.org to learn more.

SUBSCRIBE

Sign up on the Web to have WMSA's E-newsletter delivered to your email inbox with the latest information on regional initiatives and other activities.



Phone: 616.356.6060

FAX: 616.328.5133

Mailing Address: P.O. Box 68046
Grand Rapids, MI 49516-8046

Physical Address: 951 Wealthy Street SE
Grand Rapids, MI 49506-1214

Website: www.wm-alliance.org

Email: info@wm-alliance.org

Blog: wmsa.wordpress.com

Facebook: West Michigan Strategic Alliance

Twitter: WMichAlliance

GOVERNMENTAL MEMBERS

Allegan County
Allegan Township
Barry County
City of Ferrysburg
City of Fremont
City of Grandville
City of Hastings
City of Norton Shores
City of South Haven
City of Walker
City of Wayland
City of Wyoming
Dorr Township
Fillmore Township
Fruitland Township
Georgetown Charter Township
Grand Rapids Charter Township
Holland Charter Township
Home Township
Kent County
Manlius Township
Monterey Township
Muskegon County
Muskegon Charter Township
Newaygo County
Ottawa County
Park Township
Pine Township
Polkton Township
Port Sheldon Township
Salem Township
Village of Howard City
Village of Lakeview
Village of Spring Lake

